

DATE: \_\_\_\_\_ PROJECT: \_\_\_\_\_ LOCATION: \_\_\_\_\_ TYPE: \_\_\_\_\_



### FEATURES

- Available in made to measure lengths accurate up to 1/16".
- Patterns available. Must consult factory for custom size and patterns.
- Damp location rated.
- Available in CRI 80+, CRI 90+.
- 5 year, 50,000 hour fixture warranty.
- 2700K, 3000K, 3500K, 4000K & 5000K color temperatures available.
- Available with PoE- Must consult factory.

### APPLICATIONS

Commercial and business area, public buildings, offices, retail stores, hotels and restaurants, arts and culture spaces.

### FINISH

Standard powder-coated white. Custom Colors Available.

### CONSTRUCTION

Extruded aluminum housing with die cast ends.

### DIFFUSER

Specially design louver. Available In combine satin acrylic lens + louver, three optional beam spread available - Consult factory.

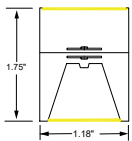
### FIXTURE RATINGS & CERTIFICATIONS



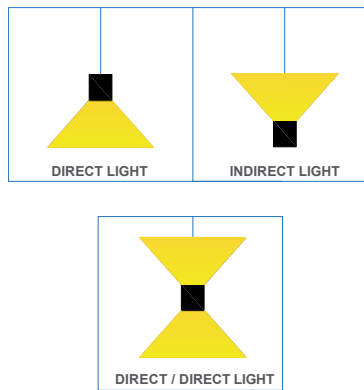
### ELECTRICAL

Remote driver with 0-10V dimming standard. Remote emergency battery (Optional). Several driver options available.

### DIMENSIONS



### LIGHT DISTRIBUTION

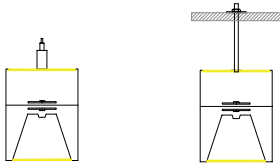


### LED SYSTEM OUTPUT

| OUTPUT | System Watts  |          | Delivered Lumens |           |
|--------|---------------|----------|------------------|-----------|
|        | DIRECT        | INDIRECT | DIRECT           | INDIRECT  |
| OP1    | 4 W/ft        | 4 W/ft   | 380 lm/ft        | 380 lm/ft |
| OP2    | 6 W/ft        | 6 W/ft   | 570 lm/ft        | 570 lm/ft |
| OP3    | 8 W/ft        | 8 W/ft   | 760 lm/ft        | 760 lm/ft |
| OP4    | 10 W/ft       | 10 W/ft  | 950 lm/ft        | 950 lm/ft |
| OP5    | Custom Output |          | Custom Output    |           |

Fixture lumen output data refer to delivered lumens for 3500K. Lumens multiplier 80CRI :0.92 for 27K, 0.95 for 30K & 35K, 1.05 for 40K. Consult factory for other lumen package.

### MOUNTING



### ORDERING KEY



| 1 - MODEL # | 2 - LENGTH   | 3 - CRI          | 4 - COLOR TEMP   | 5 - LED OUTPUT   |   | 6 - VOLTAGE  |
|-------------|--|------------------|--|--|---|--|
| LUM-UGR 1P  | 2 - 2 ft<br>4 - 4 ft<br>6 - 6 ft<br>8 - 8 ft<br>10 - 10 ft<br>X'-X"' - Custom Length<br>PAT - Pattern<br>(Consult Factory) | 80 CRI<br>90 CRI | 27K - 2700K<br>30K - 3000K<br>35K - 3500K<br>40K - 4000K<br>50K - 5000K<br>TW - Tunable White<br>RGB - Color Tuning 1<br>RGBW - Color Tuning 2 | D - DIRECT<br>OP1 - 4 W/ft<br>OP2 - 6 W/ft<br>OP3 - 8 W/ft<br>OP4 - 10 W/ft<br>OP5 - Custom Output | ID - INDIRECT<br>OP1 - 4 W/ft<br>OP2 - 6 W/ft<br>OP3 - 8 W/ft<br>OP4 - 10 W/ft<br>OP5 - Custom Output | UNV - Universal<br>(120/277V)<br>347V* - 347V<br>*Must use DB Driver |

| 7 - DRIVER  | 8 - FINISH   | 9 - MOUNTING   | 10 - OTHER OPTIONS  | 11 - DIFFUSER   |
|---|--|--|---|---|
| DIM 1% - Standard 1% Dimming (0-10V)<br>DIM 0.1% - 0.1% Dimming (0-10V)<br>LT1 - Lutron Digital EcoSystem<br>C1 - Tunable White control<br>C2 - RGB Tuning control<br>C3 - RGBW Tuning control<br>PoE - Power over Ethernet.<br>Consult Factory for Compatibility | W - White (Standard)<br>BLK* - Black<br>CC* - Custom Color<br>(Provide RAL#)<br>*White cord and canopy provided. | AC - Air Cable Mount-50"<br>PS- Pendant Stem<br>( 12", 18", 24", 36", 48") | DC - Dual Circuit<br>(Separate Up/Down Control)<br>EM1 - Emergency Pack-120V<br>EM2 - Emergency Pack 277V<br>EMCKT - Emergency Circuit<br><br>*Emergency Battery Available in modules of 4-ft. and longer | LV15 - Louver 15°<br>LV30 - Louver 30°<br>LV45 - Louver 45°<br>LV15+SL - LV 15°+Satin Acrylic Lens<br>LV30+SL - LV30°+Satin Acrylic Lens<br>LV45+SL - LV 45°+Satin Acrylic Lens |