

DATE: _____ PROJECT: _____ LOCATION: _____ TYPE: _____



FEATURES

- Damp location rated.
- Available in CRI 80+, CRI 90+.
- 5 year, 50,000 hour fixture warranty.
- 2700K, 3000K, 3500K, 4000K & 5000K color temperatures available.
- Available with PoE- Must consult factory.

APPLICATIONS Commercial and business area, public buildings, offices, retail stores, hotels and restaurants, arts and culture spaces.

FINISH Standard powder-coated white. Custom colors available.

CONSTRUCTION Cold rolled steel housing - 20 gauge

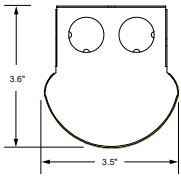
DIFFUSER Frosted acrylic lens with no LED Imagine

FIXTURE RATINGS & CERTIFICATIONS

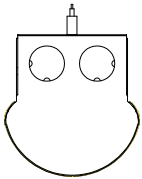


ELECTRICAL Integral driver with 0-10V dimming standard. Integral emergency battery (Optional). Several driver options available

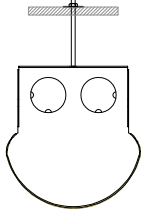
DIMENSIONS



MOUNTING

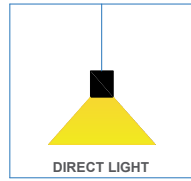


AIR CABLE MOUNT



STEM MOUNT

LIGHT DISTRIBUTION



LED SYSTEM OUTPUT

OUTPUT	System Watts	Delivered Lumens
	DIRECT	DIRECT
OP1	4 W/ft	380 lm/ft
OP2	6 W/ft	570 lm/ft
OP3	8 W/ft	760 lm/ft
OP4	10 W/ft	950 lm/ft
OP5	Custom Output	

Fixture lumen output data refer to delivered lumens for 3500K. Lumens multiplier 80CRI :0.92 for 27K, 0.95 for 30K & 35K, 1.05 for 40K. Consult factory for other lumen package.

ORDERING KEY



1 - MODEL #	2 - LENGTH	3 - CRI	4 - COLOR TEMP	5 - LED OUTPUT	6 - VOLTAGE	7 - DRIVER
LUM-STRIP RD P	2 - 2 ft 4 - 4 ft 8 - 8 ft	80 CRI 90 CRI	27K - 2700K 30K - 3000K 35K - 3500K 40K - 4000K 50K - 5000K TW - Tunable White RGB - Color Tuning 1 RGBW - Color Tuning 2	OP1 - 4 W/ft OP2 - 6 W/ft OP3 - 8 W/ft OP4 - 10 W/ft OP5 - Custom Output	UNV - Universal (120/277V) 347V* - 347V *Must use DB Driver	DIM 1% - Standard 1% Dimming (0-10V) DIM 0.1%- 0.1% Dimming (0-10V) LT1 - Lutron Digital EcoSystem C1 - Tunable White control C2 - RGB Tuning control C3 - RGBW Tuning control PoE - Power over Ethernet. Consult Factory for Compatibility

8 - FINISH	9 - MOUNTING	10 - SENSOR	11 - OTHER OPTIONS
W - White (Standard) BLK* - Black CC* - Custom Color (Provide RAL#) *White cord and canopy provided.	AC - Air Cable Mount-50" PS- Pendant Stem (12", 18", 24", 36", 48")	OS - Occupancy Sensor VS - Vacancy Sensor DH - Daylight Harvesting ES - Enlighted Sensor	EM1 - Emergency Pack-120V EM2 - Emergency Pack 277V EMCKT - Emergency Circuit *Emergency Battery Available in modules of 4-ft. and longer