

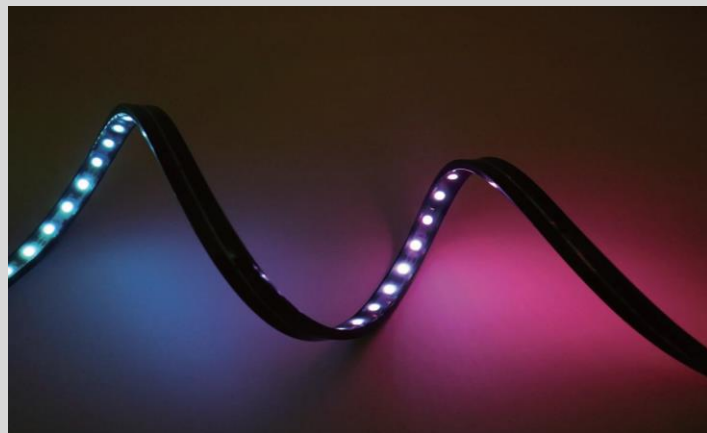
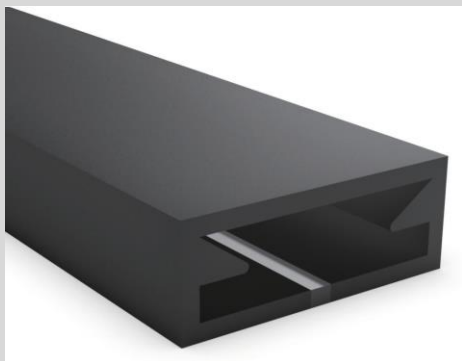
Neon Tube
2022



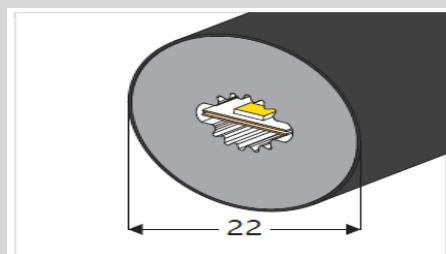
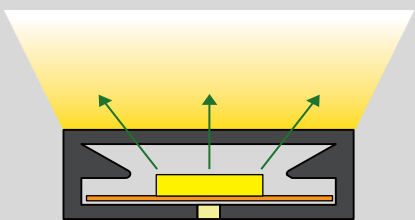
ILUMIYO NEON TAPE LIGHT



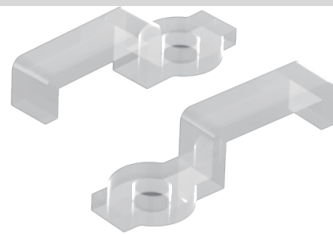
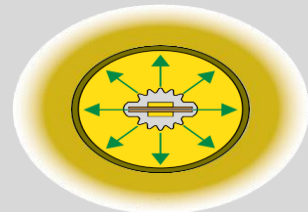
ILUMIYO LLC
Email : Info@ilumiyo.com
Web: www.ilumiyo.com



#LM0513	
Specification	
PCB Width MM	10
Section Size MM	5*13
Beam Angle	120°
Light Direction	Top Lighting
Cutting Mark	YES



#LMØ22 (mm)360°	
Specification	
PCB Width MM	08
Section Size MM	Ø22
Beam Angle	360°
Light Direction	360°
Cutting Mark	YES



End cap with hole

End cap with no hole

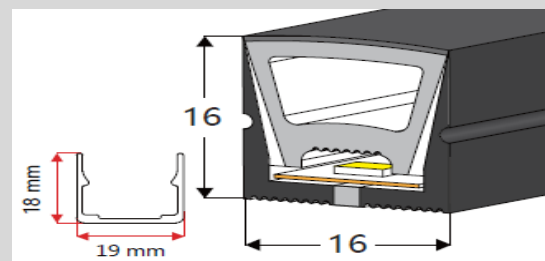
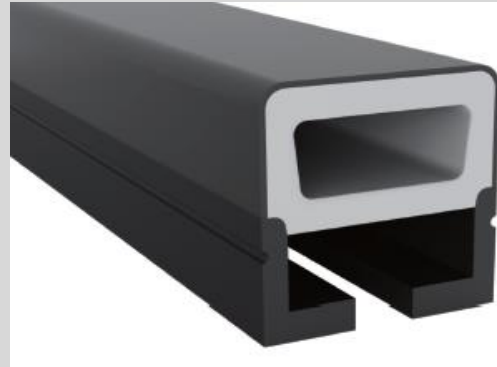
Plastic clip



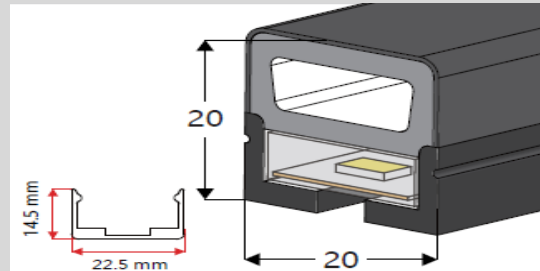
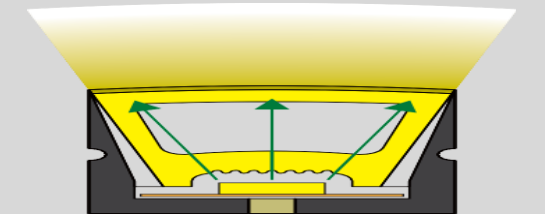
End cap with hole

End cap with no hole

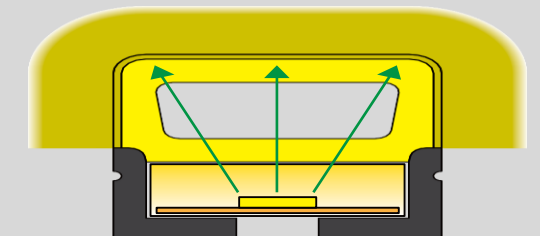
Plastic clip



#LM1616	
Specification	
PCB Width MM	10
Section Size MM	16*16
Beam Angle	120°
Light Direction	Top Lighting
Cutting Mark	YES



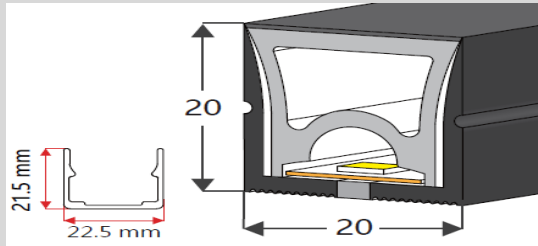
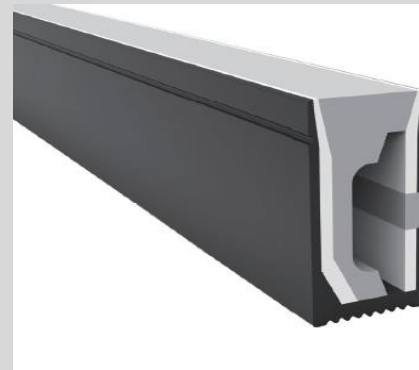
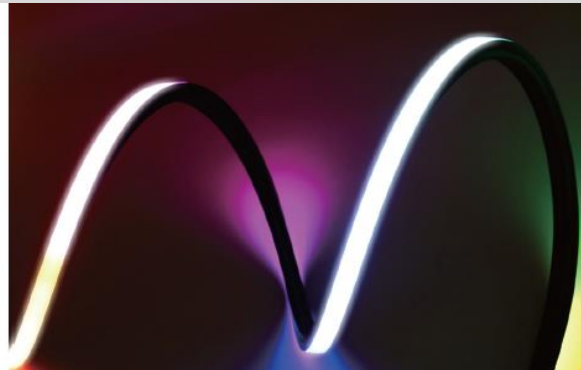
#LM20*20	
Specification	
PCB Width MM	10
Section Size MM	20*20
Beam Angle	180°
Light Direction	Top Lighting
Cutting Mark	YES



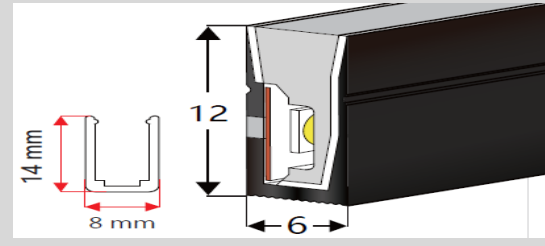
End cap with hole End cap with no hole Aluminum Clip Aluminum Profile Flexible Profile



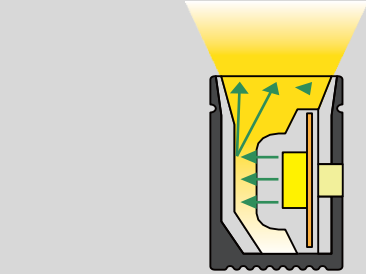
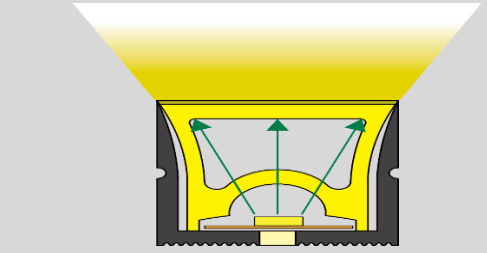
Aluminum Clip Aluminum Profile Flexible Profile



#LM2020	
Specification	
PCB Width MM	12
Section Size MM	20*20
Beam Angle	120°
Light Direction	Top Lighting
Cutting Mark	YES



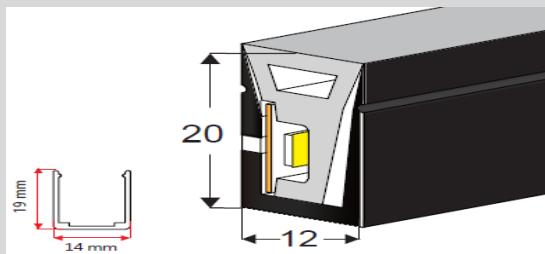
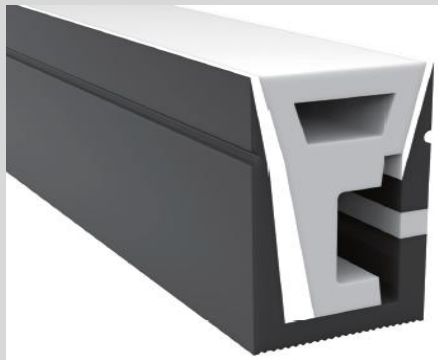
#LM06*12	
Specification	
PCB Width MM	08
Section Size MM	06*12
Beam Angle	120°
Light Direction	Top Lighting
Cutting Mark	YES



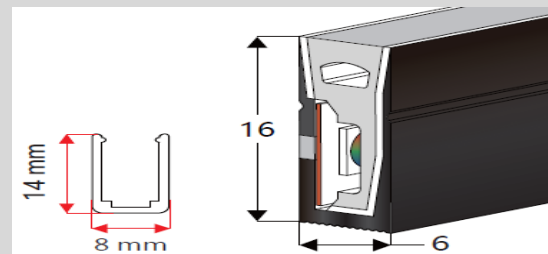
End cap with hole End cap with no hole Aluminum Clip Aluminum Profile Flexible Profile



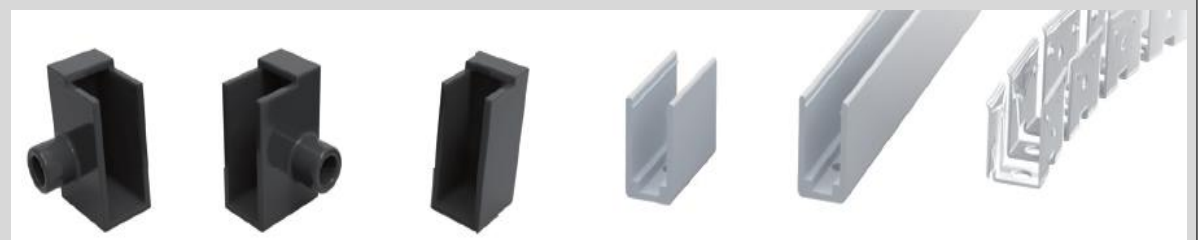
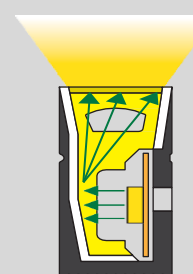
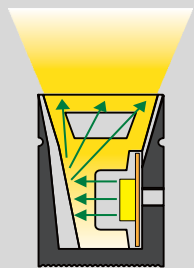
End cap with hole End cap with no hole Aluminum Clip Aluminum Profile Flexible Profile



#LM12*20	
Specification	
PCB Width MM	10/12
Section Size MM	12*20
Beam Angle	120°
Light Direction	Top Lighting
Cutting Mark	YES



#LM06*16	
Specification	
PCB Width MM	08
Section Size MM	06*16
Beam Angle	120°
Light Direction	Top Lighting
Cutting Mark	YES



End cap with hole

End cap with no hole

Aluminum Clip

Aluminum Profile

Flexible Profile

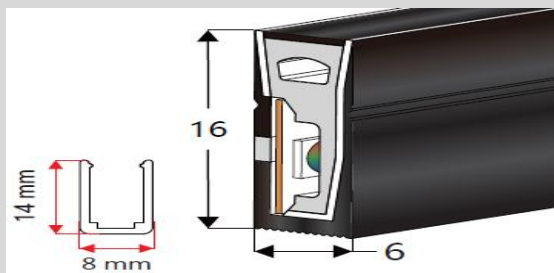
End cap with hole

End cap with no hole

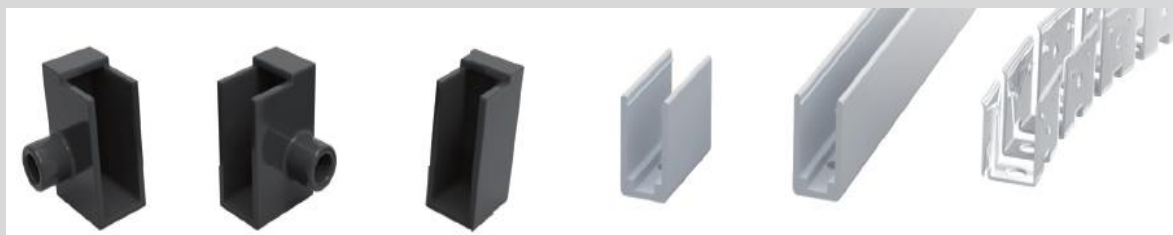
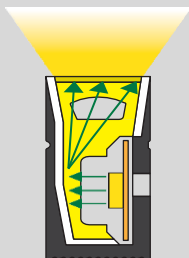
Aluminum Clip

Aluminum Profile

Flexible Profile



#LM06*16	
Specification	
PCB Width MM	08
Section Size MM	06*16
Beam Angle	120°
Light Direction	Top Lighting
Cutting Mark	YES



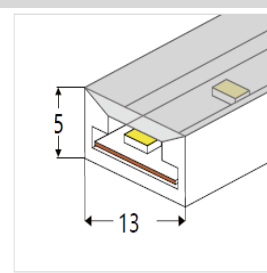
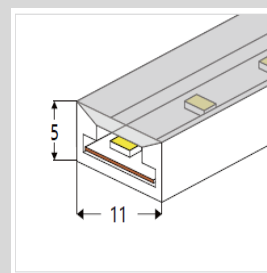
End cap with hole

End cap with no hole

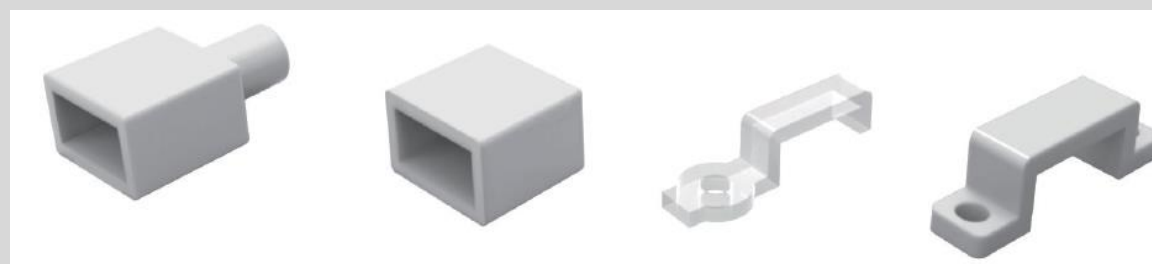
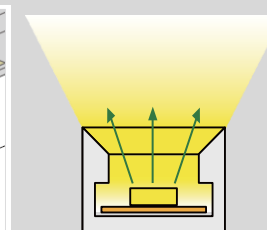
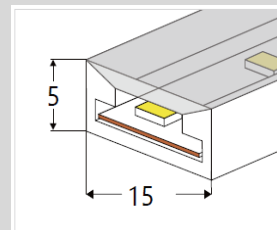
Aluminum Clip

Aluminum Profile

Flexible Profile



#LM 0511, #LM0513, #LM0515	
Specification	
PCB Width MM	08,10,12
Section Size MM	5*11, 5*13, 5*15
Beam Angle	120°
Light Direction	Top Lighting
IP Grade	IP67

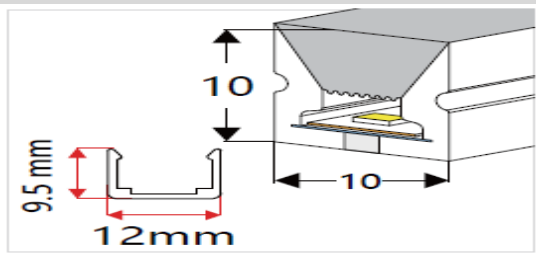
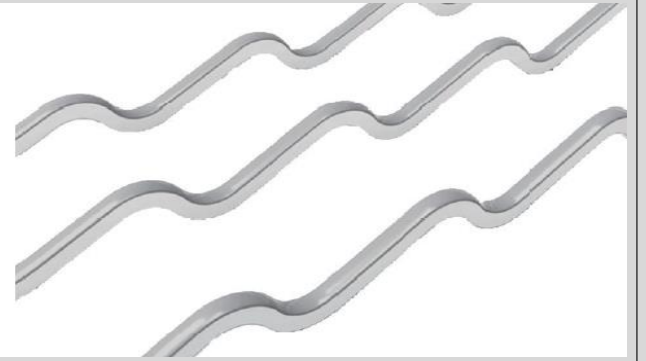
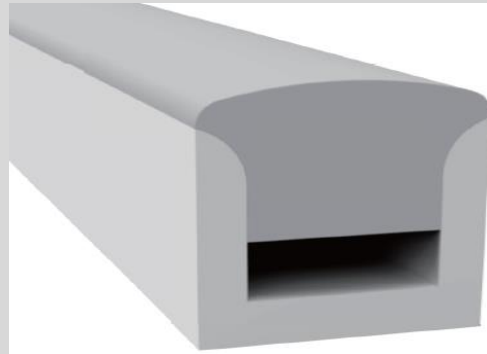
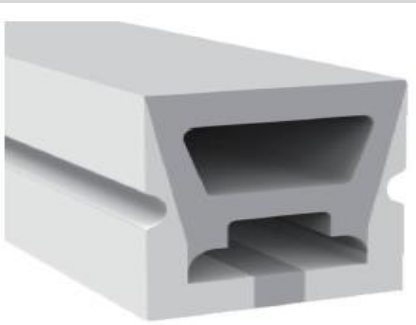


End cap with hole

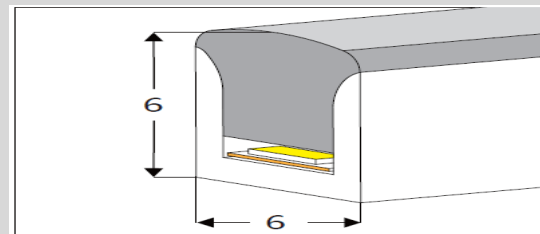
End cap with no hole

Plastic Clip

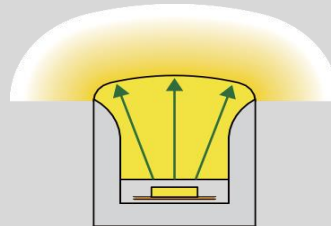
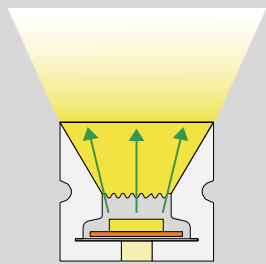
Plastic Clip



#LM10*10	
Specification	
PCB Width MM	06
Section Size MM	10*10
Beam Angle	120°
Light Direction	Top Lighting
Cutting Mark	YES



#LM06*06	
Specification	
PCB Width MM	03
Section Size MM	06*06
Beam Angle	120°
Light Direction	Top Lighting
Cutting Mark	YES



End cap with hole

End cap with no hole

Aluminum Clip

Aluminum Profile

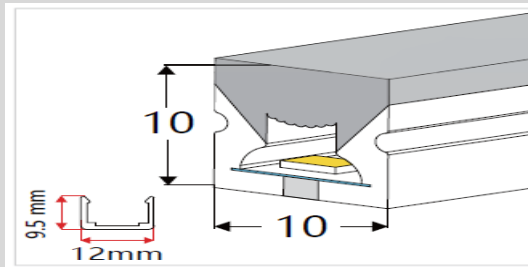
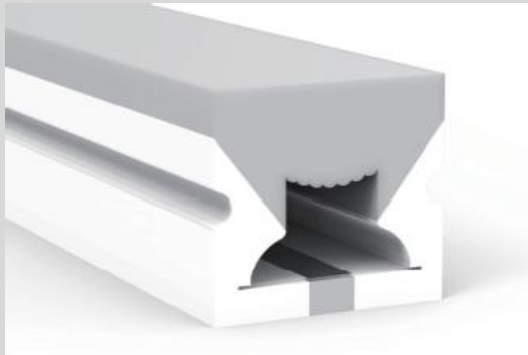
Flexible Profile



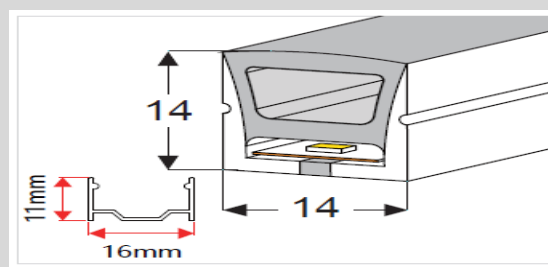
End cap with hole

End cap with no hole

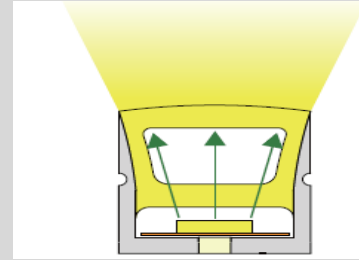
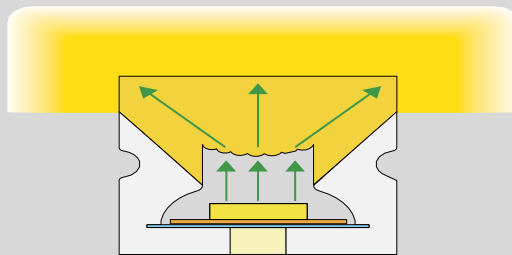
3M Tape



#LM10*10	
Specification	
PCB Width MM	06
Section Size MM	10*10
Beam Angle	180°
Light Direction	Top Lighting
Cutting Mark	YES



#LM14*14	
Specification	
PCB Width MM	10
Section Size MM	14*14
Beam Angle	120°
Light Direction	Top Lighting
Cutting Mark	YES



End cap with hole

End cap with no hole

Aluminum Clip

Aluminum Profile

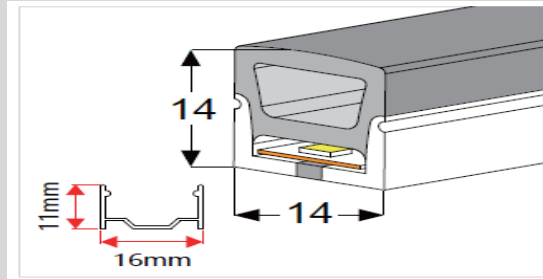
Flexible Profile

End cap with hole

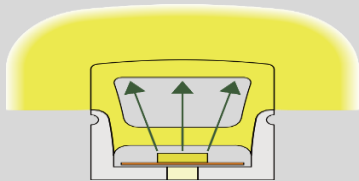
End cap with no hole

Aluminum Clip

Aluminum Profile



#LM3S14*14	
Specification	
PCB Width MM	10
Section Size MM	14*14
Beam Angle	180°
Light Direction	3 Side Top Lighting
Cutting Mark	YES

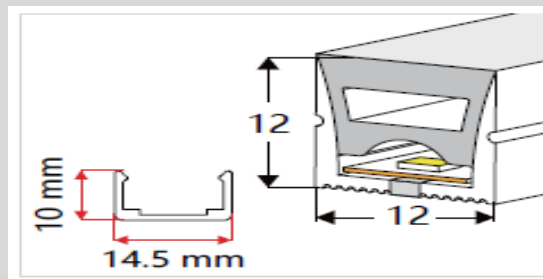


End cap with hole

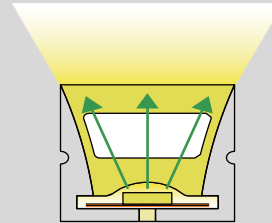
End cap with no hole

Aluminum Clip

Aluminum Profile



#LM12*12	
Specification	
PCB Width MM	08
Section Size MM	12*12
Beam Angle	120°
Light Direction	Top Lighting
Cutting Mark	YES



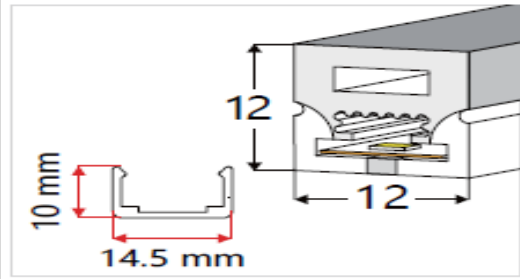
End cap with hole

End cap with no hole

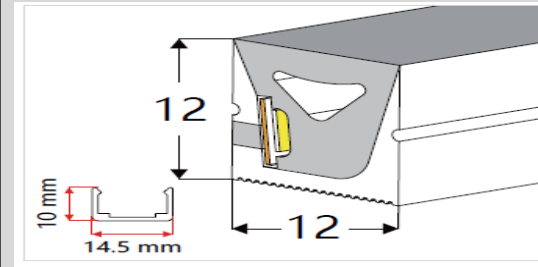
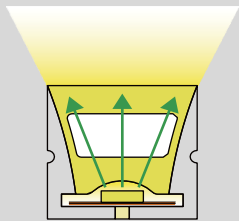
Aluminum Clip

Aluminum Profile

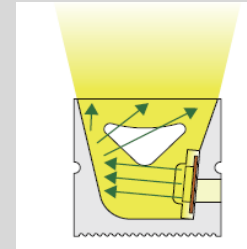
Flexible Profile



#LM3S12*12	
Specification	
PCB Width MM	08
Section Size MM	12*12
Beam Angle	180°
Light Direction	3 Side Top Lighting
Cutting Mark	YES



#LM12*12	
Specification	
PCB Width MM	05
Section Size MM	12*12
Beam Angle	120°
Light Direction	Side Lighting
Cutting Mark	YES



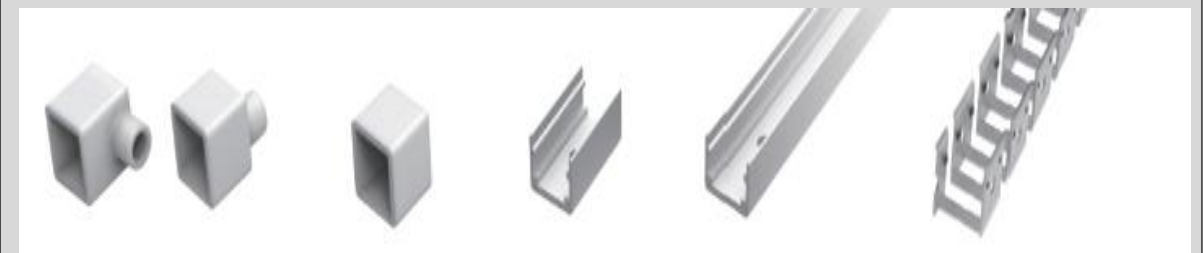
End cap with hole

End cap with no hole

Aluminum Clip

Aluminum Profile

Flexible Profile



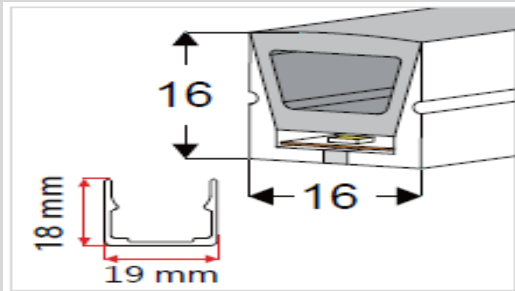
End cap with hole

End cap with no hole

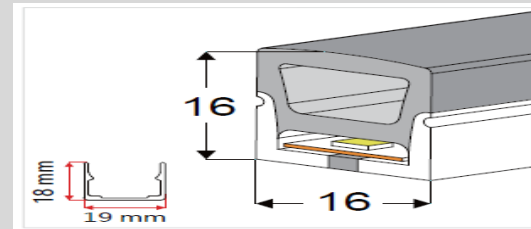
Aluminum Clip

Aluminum Profile

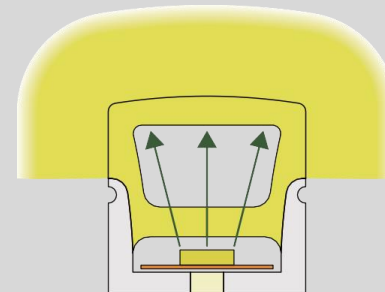
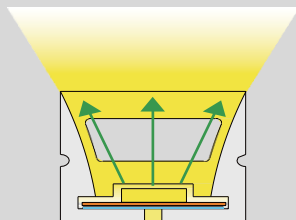
Flexible Profile



#LM16*16	
Specification	
PCB Width MM	10
Section Size MM	16*16
Beam Angle	120°
Light Direction	Top Lighting
Cutting Mark	YES



#LM3S16*16	
Specification	
PCB Width MM	10
Section Size MM	16*16
Beam Angle	180°
Light Direction	3 Side Top Lighting
Cutting Mark	YES



End cap with hole

End cap with no hole

Aluminum Clip

Aluminum Profile

Flexible Profile



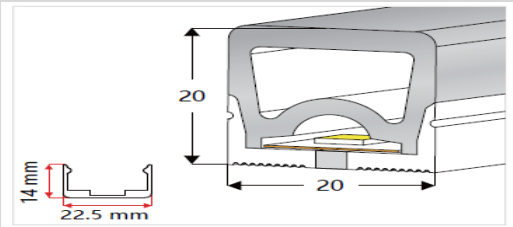
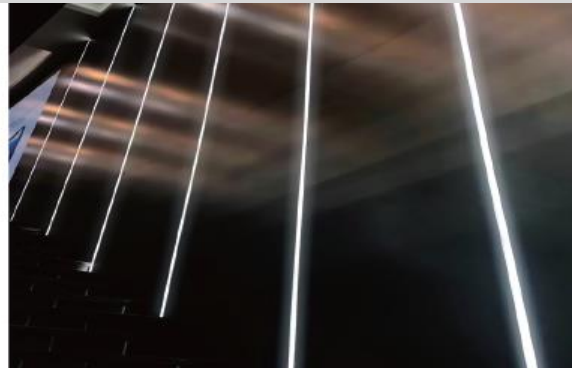
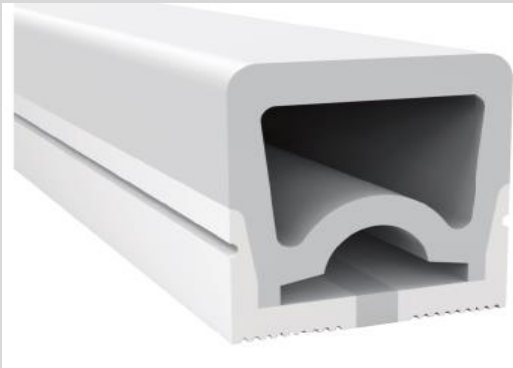
End cap with hole

End cap with no hole

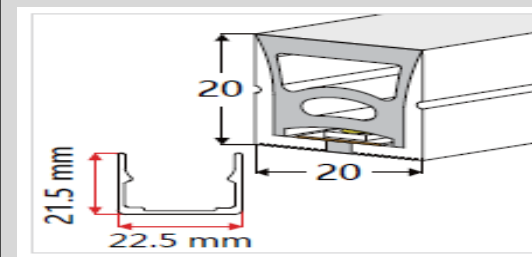
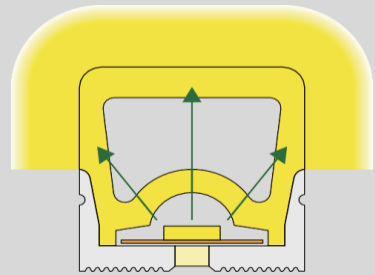
Aluminum Clip

Aluminum Profile

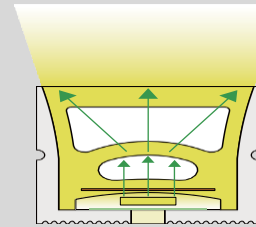
Flexible Profile



#LM3S20*20	
Specification	
PCB Width MM	10/12
Section Size MM	20*20
Beam Angle	120°
Light Direction	3 Side Top Lighting
Cutting Mark	YES



#LM20*20	
Specification	
PCB Width MM	10/12
Section Size MM	20*20
Beam Angle	120°
Light Direction	Top Lighting
Cutting Mark	YES



End cap with hole

End cap with no hole

Aluminum Clip

Aluminum Profile

Flexible Profile



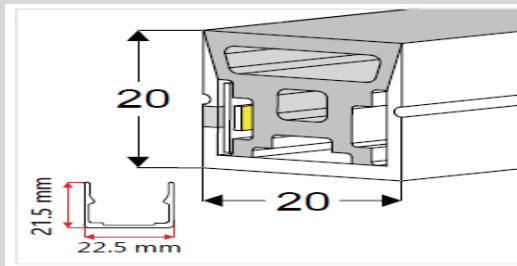
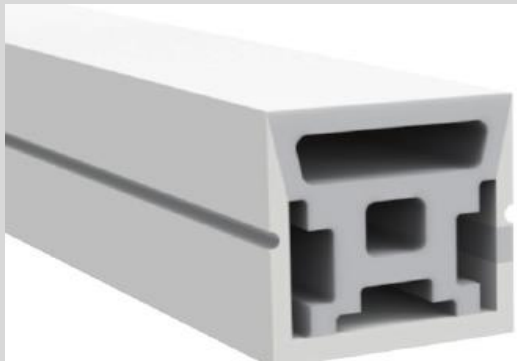
End cap with hole

End cap with no hole

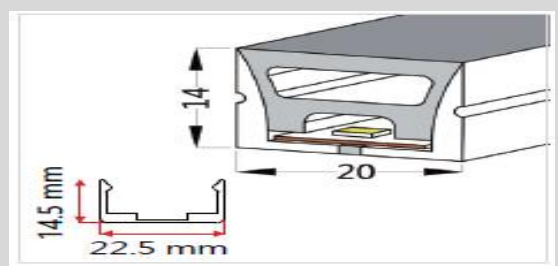
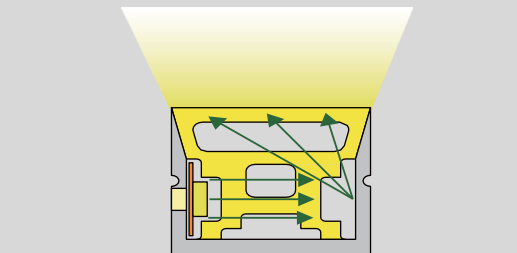
Aluminum Clip

Aluminum Profile

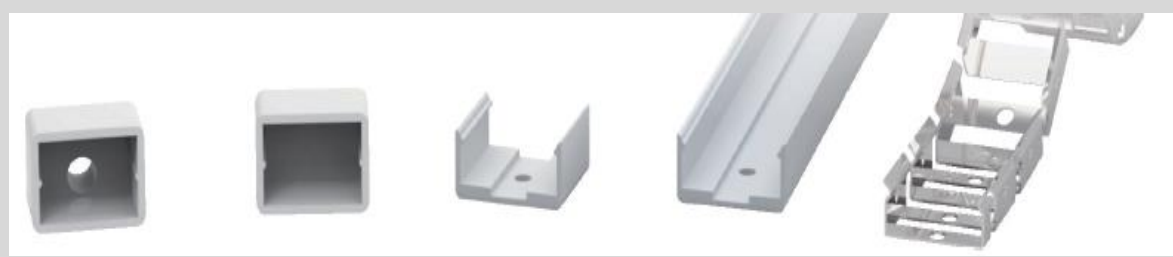
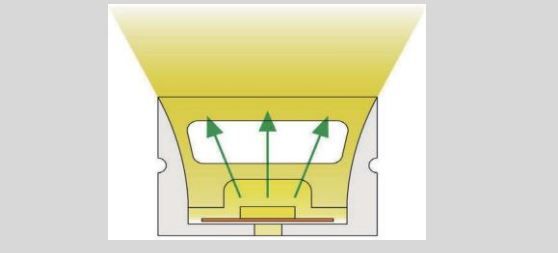
Flexible Profile



#LM20*20	
Specification	
PCB Width MM	10
Section Size MM	20*20
Beam Angle	120°
Light Direction	Side Lighting
Cutting Mark	YES



#LM20*14	
Specification	
PCB Width MM	12
Section Size MM	20*14
Beam Angle	120°
Light Direction	Top Lighting
Cutting Mark	YES



End cap with hole

End cap with no hole

Aluminum Clip

Aluminum Profile

Flexible Profile

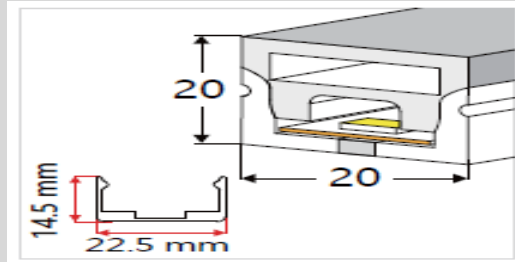
End cap with hole

End cap with no hole

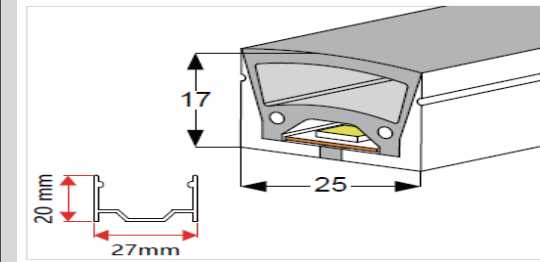
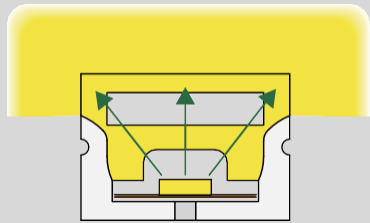
Aluminum Clip

Aluminum Profile

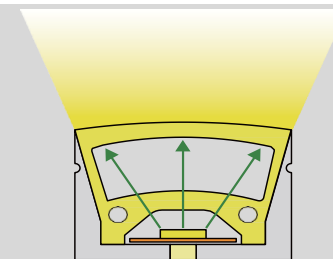
Flexible Profile



#LM3S20*14	
Specification	
PCB Width MM	12
Section Size MM	20*14
Beam Angle	180°
Light Direction	3 Side Top Lighting
Cutting Mark	YES



#LM25*17	
Specification	
PCB Width MM	12
Section Size MM	25*17
Beam Angle	120°
Light Direction	Top Lighting
Cutting Mark	YES



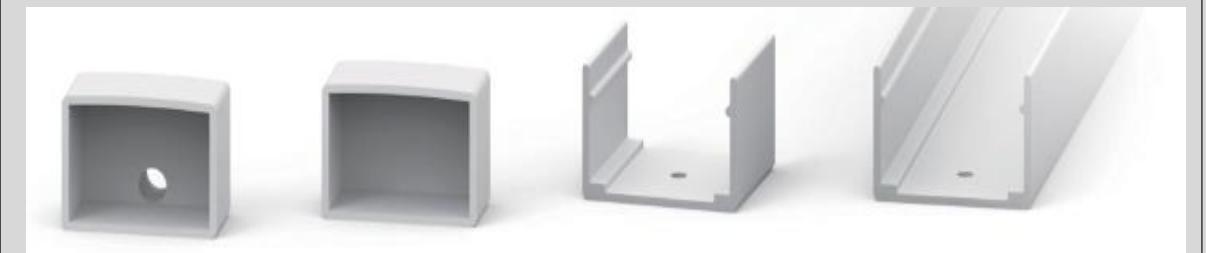
End cap with hole

End cap with no hole

Aluminum Clip

Aluminum Profile

Flexible Profile

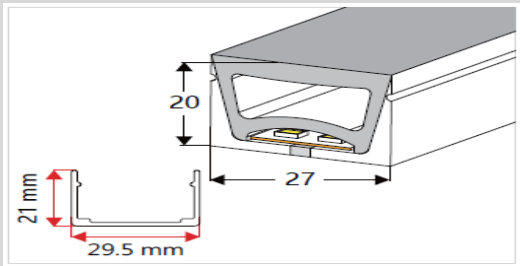


End cap with hole

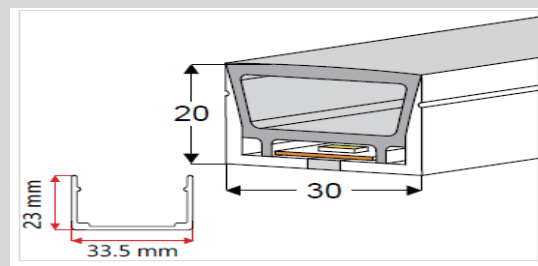
End cap with no hole

Aluminum Clip

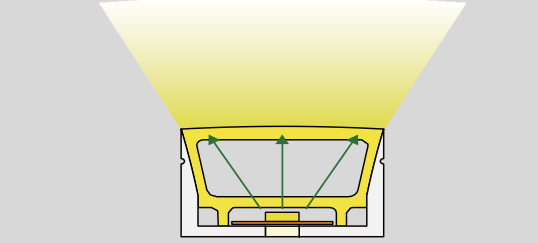
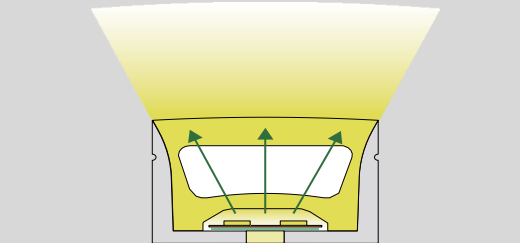
Aluminum Profile



#LM27*20	
Specification	
PCB Width MM	12/15
Section Size MM	27*20
Beam Angle	120°
Light Direction	Top Lighting
Cutting Mark	YES



#LM30*20	
Specification	
PCB Width MM	12/15
Section Size MM	30*20
Beam Angle	120°
Light Direction	Top Lighting
Cutting Mark	YES



End cap with hole

End cap with no hole

Aluminum Clip

Aluminum Profile

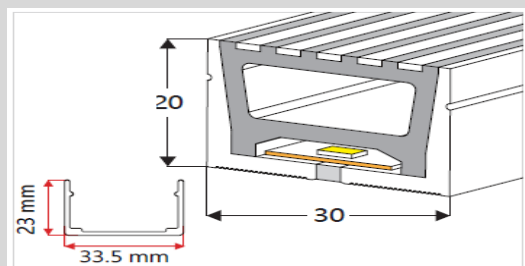
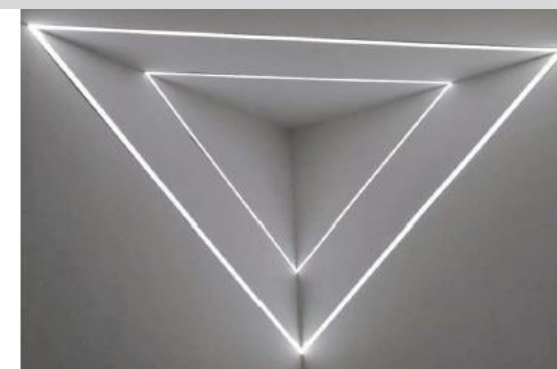
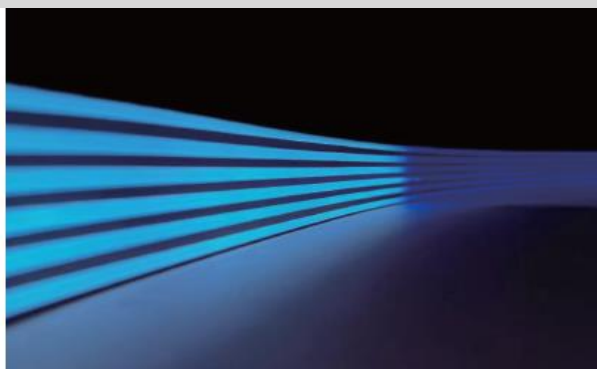


End cap with hole

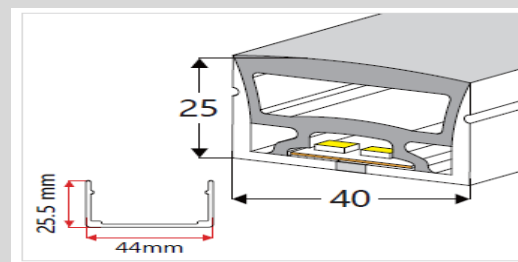
End cap with no hole

Aluminum Clip

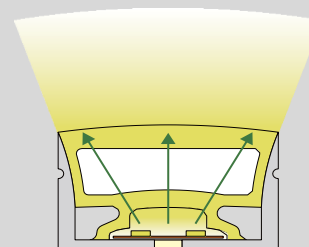
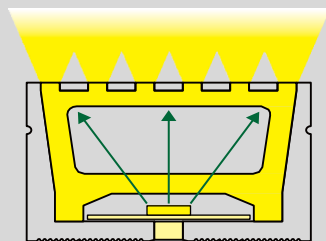
Aluminum Profile



#LM30*20	
Specification	
PCB Width MM	12/15
Section Size MM	30*20
Beam Angle	120°
Light Direction	Top Lighting
Cutting Mark	YES



#LM40*25	
Specification	
PCB Width MM	20
Section Size MM	40*25
Beam Angle	120°
Light Direction	Top Lighting
Cutting Mark	YES



End cap with hole

End cap with no hole

Aluminum Clip

Aluminum Profile



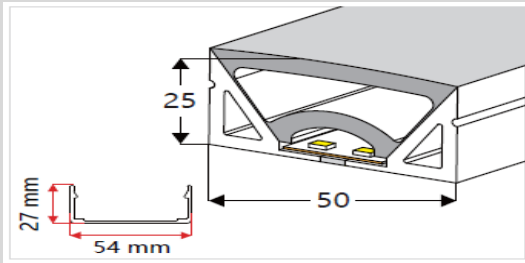
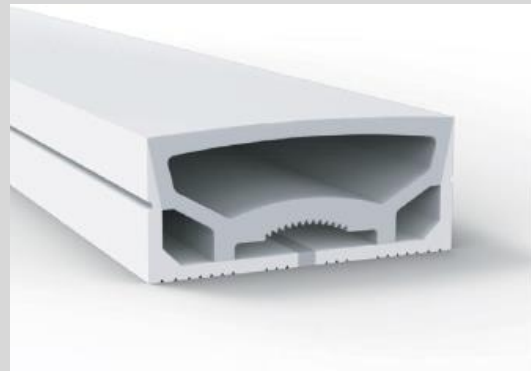
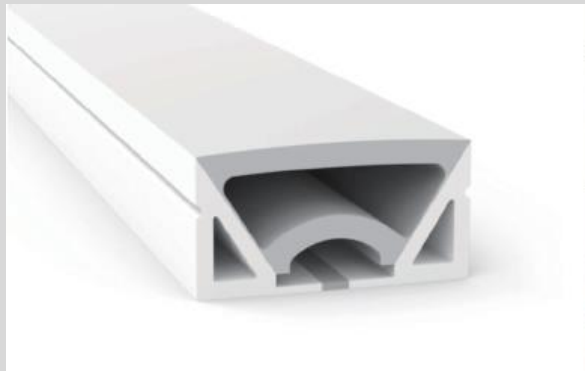
End cap with hole

End cap with no hole

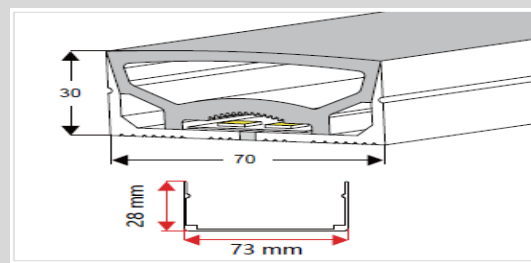
Aluminum Clip

Aluminum Profile

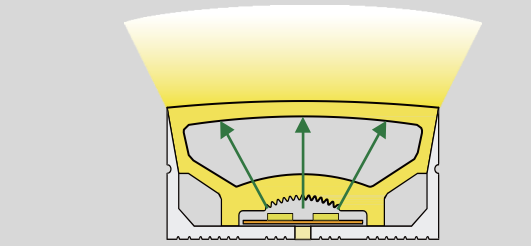
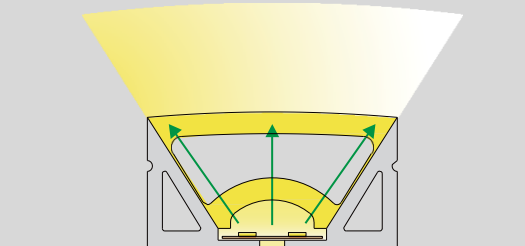
Flexible Profile



#LM50*25	
Specification	
PCB Width MM	20
Section Size MM	50*25
Beam Angle	120°
Light Direction	Top Lighting
Cutting Mark	YES



#LM70*30	
Specification	
PCB Width MM	30
Section Size MM	70*30
Beam Angle	120°
Light Direction	Top Lighting
Cutting Mark	YES



End cap with hole

End cap with no hole

Aluminum Clip

Aluminum Profile

Flexible Profile

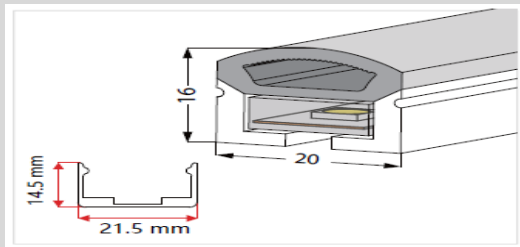
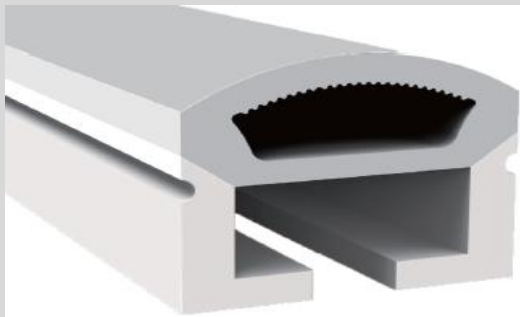


End cap with hole

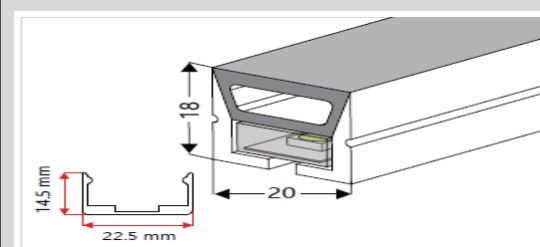
End cap with no hole

Aluminum Clip

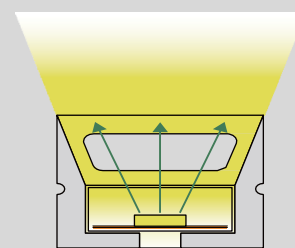
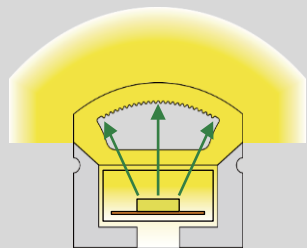
Aluminum Profile



#LM3S20*16	
Specification	
PCB Width MM	10
Section Size MM	20*16
Beam Angle	180°
Light Direction	3 Side Top Lighting
Cutting Mark	YES



#LM20*18	
Specification	
PCB Width MM	10
Section Size MM	20*18
Beam Angle	180°
Light Direction	Side Lighting
Cutting Mark	YES



Aluminum
Clip

Aluminum
Profile

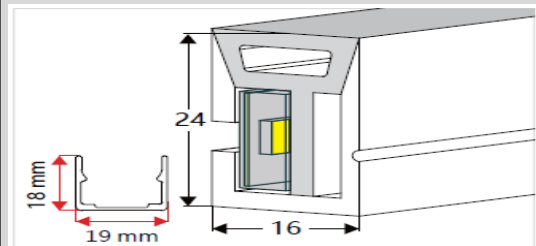
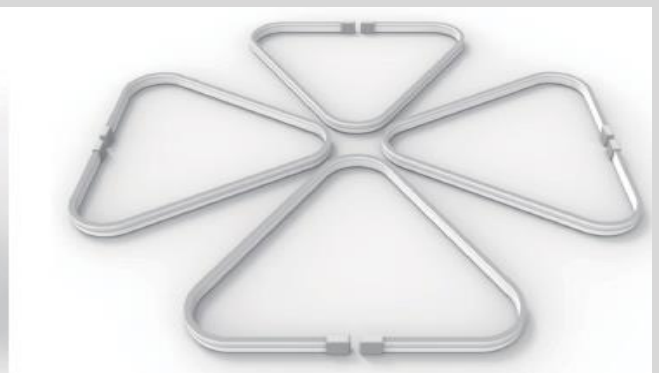
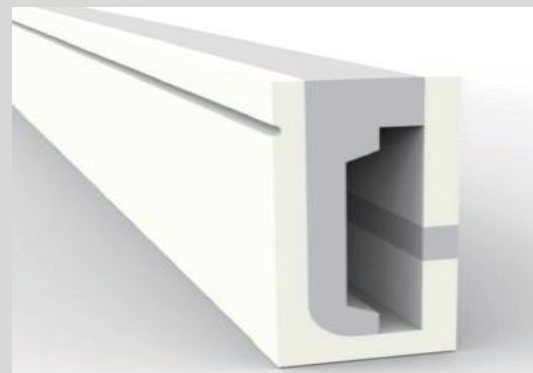
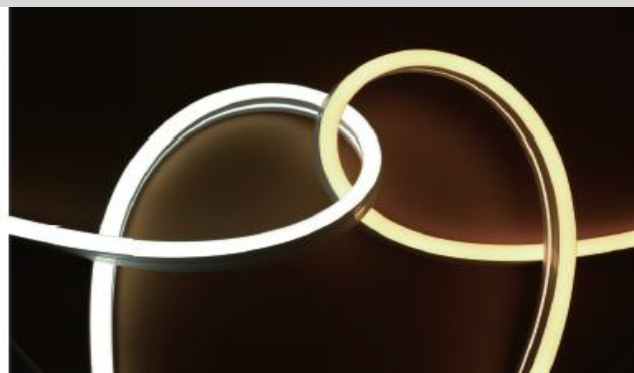
Flexible
Profile



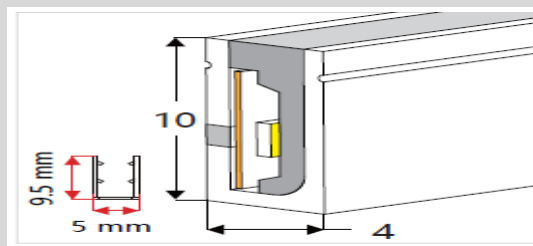
Aluminum
Clip

Aluminum
Profile

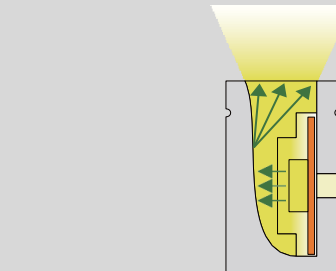
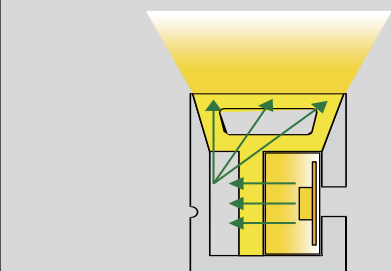
Flexible
Profile



#LM16*24	
Specification	
PCB Width MM	10
Section Size MM	16*24
Beam Angle	120°
Light Direction	Side Lighting
Cutting Mark	YES



#LM04*10	
Specification	
PCB Width MM	5/6
Section Size MM	04*10
Beam Angle	120°
Light Direction	Side Lighting
Cutting Mark	YES



Aluminum
Clip



Aluminum
Profile

Flexible
Profile

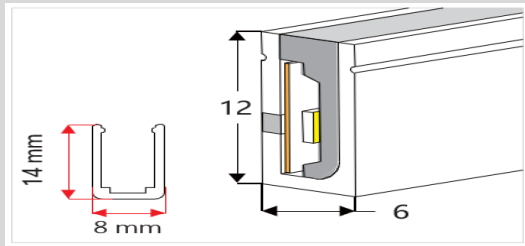
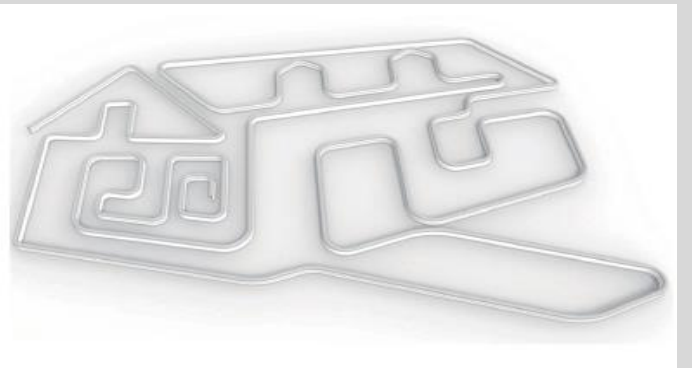
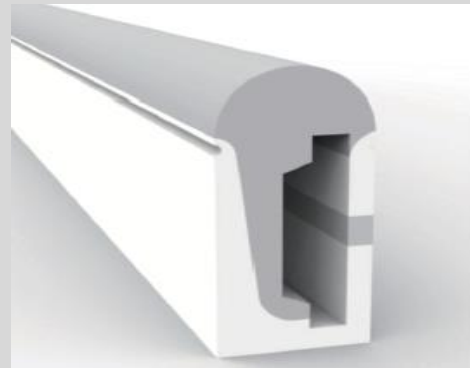
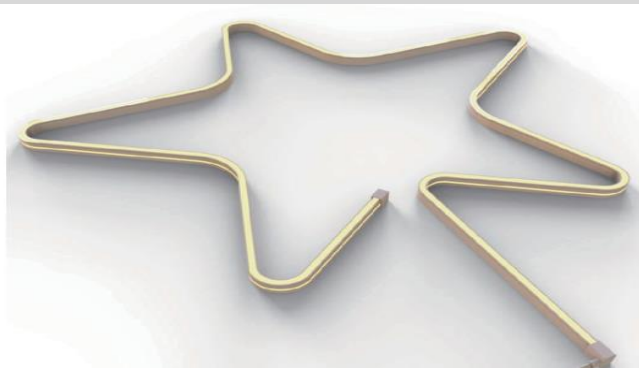
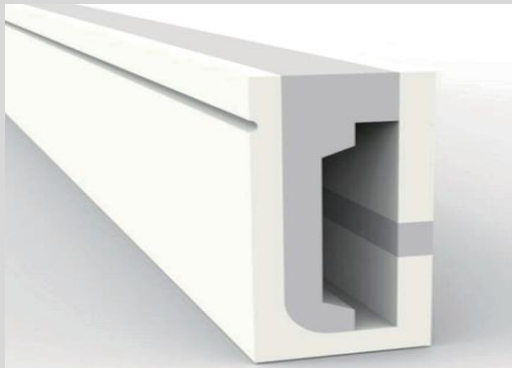


End cap with
hole

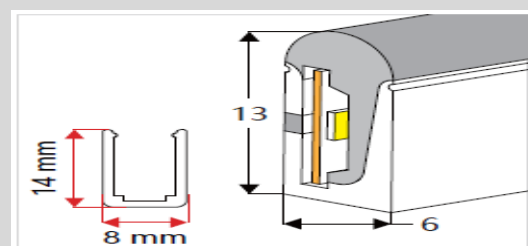
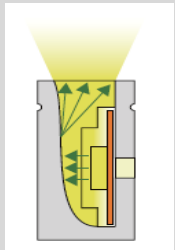
End cap with
no hole

Aluminum
Clip

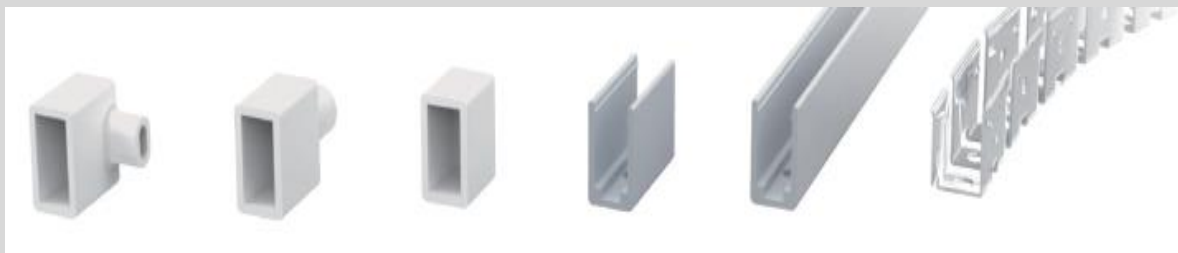
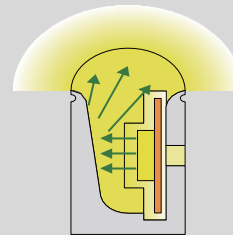
Flexible
Profile



#LM06*12	
Specification	
PCB Width MM	8
Section Size MM	06*12
Beam Angle	120°
Light Direction	Side Lighting
Cutting Mark	YES



#LM06*13	
Specification	
PCB Width MM	5/6
Section Size MM	06*13
Beam Angle	180°
Light Direction	Side Lighting
Cutting Mark	YES



End cap with hole

End cap with no hole

Aluminum Clip

Aluminum Profile

Flexible Profile



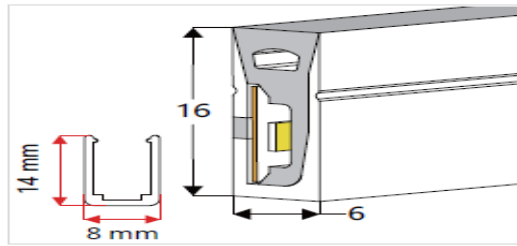
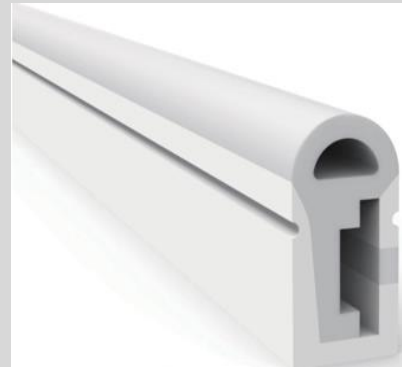
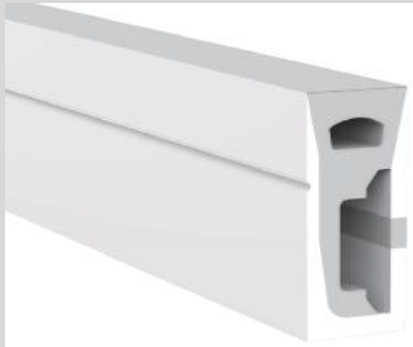
End cap with hole

End cap with no hole

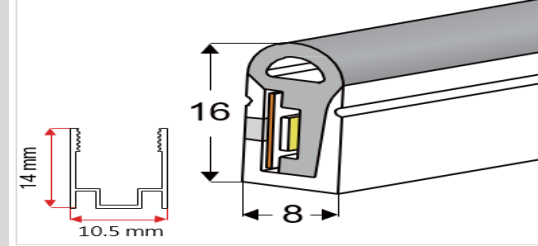
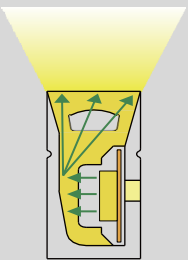
Aluminum Clip

Aluminum Profile

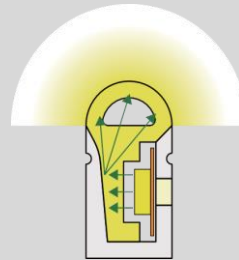
Flexible Profile



#LM06*16	
Specification	
PCB Width MM	8
Section Size MM	06*16
Beam Angle	120°
Light Direction	Side Lighting
Cutting Mark	YES



#LM08*16	
Specification	
PCB Width MM	8
Section Size MM	08*16
Beam Angle	180°
Light Direction	Side Lighting
Cutting Mark	YES



End cap with hole

End cap with no hole

Aluminum Clip

Aluminum Profile

Flexible Profile



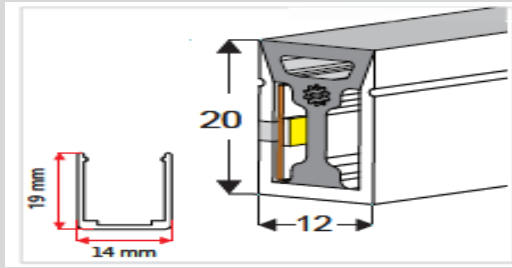
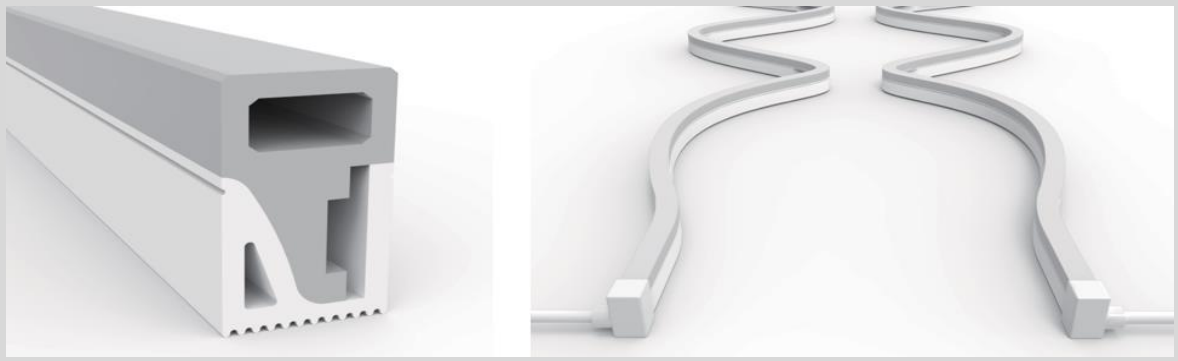
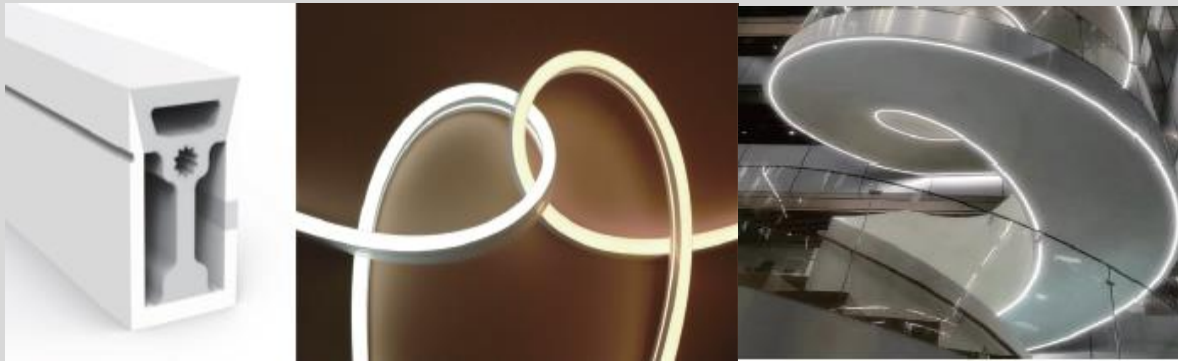
End cap with hole

End cap with no hole

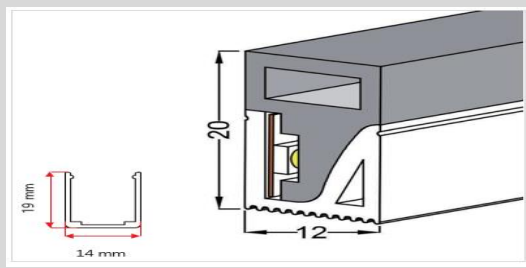
Aluminum Clip

Aluminum Profile

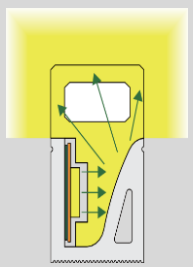
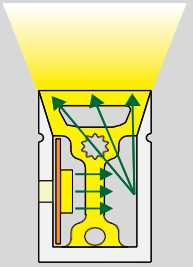
Flexible Profile



#LM06*16	
Specification	
PCB Width MM	10/12
Section Size MM	12*20
Beam Angle	120°
Light Direction	Side Lighting
Cutting Mark	YES



#LM08*16	
Specification	
PCB Width MM	10
Section Size MM	12*20
Beam Angle	180°
Light Direction	3 Side Edge Lighting
Cutting Mark	YES



End cap with hole

End cap with no hole

Aluminum Clip

Aluminum Profile

Flexible Profile

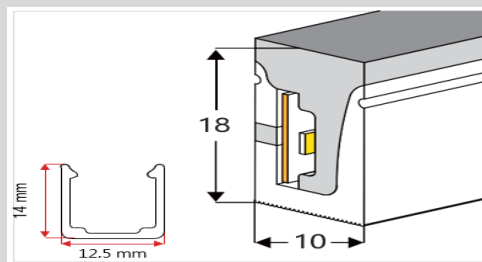
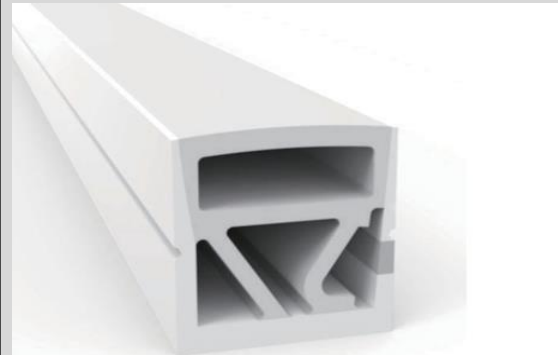
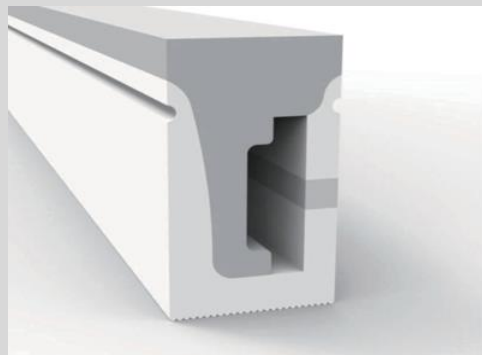
End cap with hole

End cap with no hole

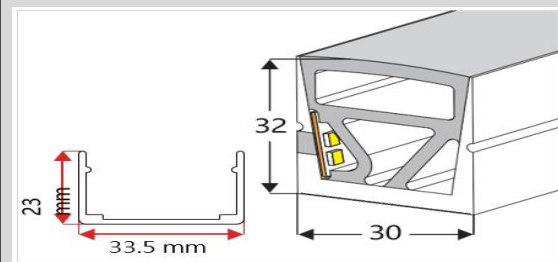
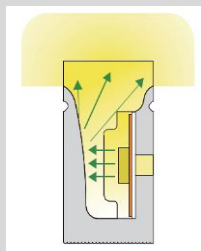
Aluminum Clip

Aluminum Profile

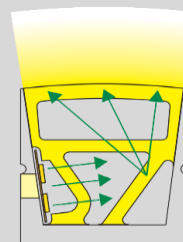
Flexible Profile



#LM10*18	
Specification	
PCB Width MM	10
Section Size MM	10*18
Beam Angle	180°
Light Direction	3 Side Edge Lighting
Cutting Mark	YES



#LM30*32	
Specification	
PCB Width MM	12/15
Section Size MM	30*32
Beam Angle	180°
Light Direction	Side Lighting
Cutting Mark	YES



End cap with hole

End cap with no hole

Aluminum Clip

Aluminum Profile

Flexible Profile



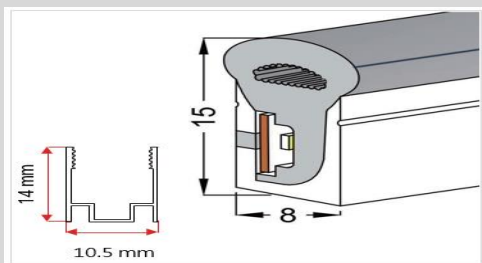
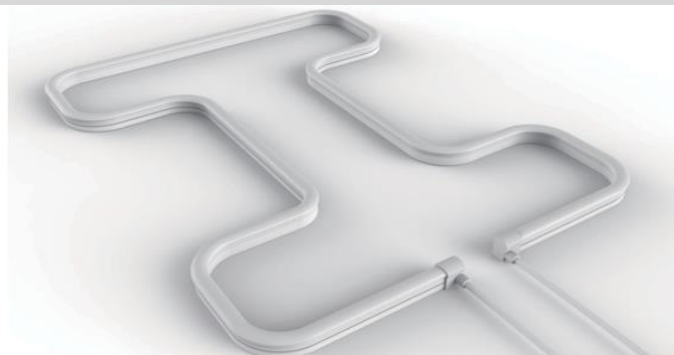
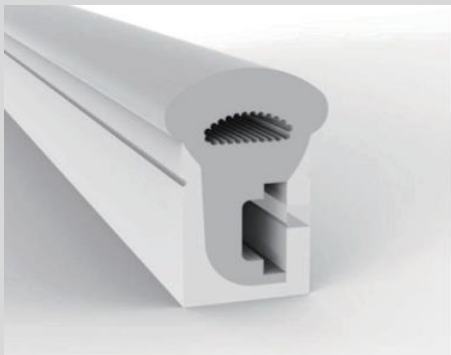
End cap with hole

End cap with no hole

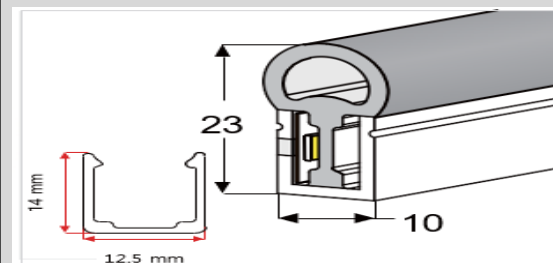
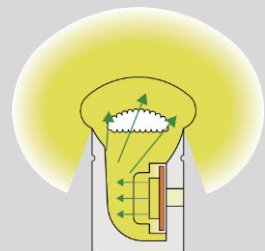
Aluminum Clip

Aluminum Profile

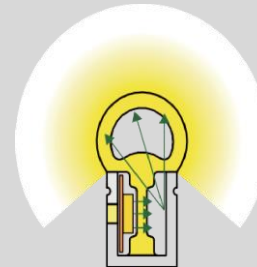
Flexible Profile



#LM08*15	
Specification	
PCB Width MM	10
Section Size MM	08*15
Beam Angle	270°
Light Direction	Side Lighting
Cutting Mark	YES



#LM10*23	
Specification	
PCB Width MM	10
Section Size MM	10*23
Beam Angle	270°
Light Direction	Side Lighting
Cutting Mark	YES



End cap with hole

End cap with no hole

Aluminum Clip

Aluminum Profile

Flexible Profile



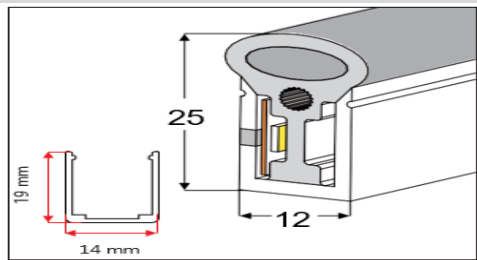
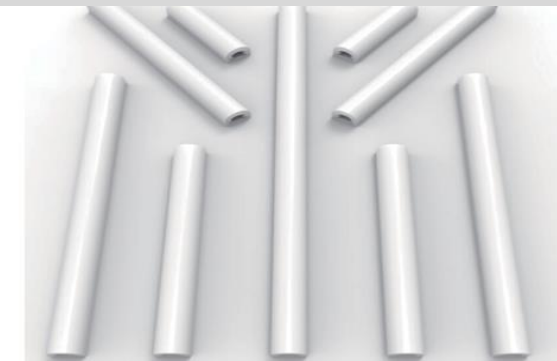
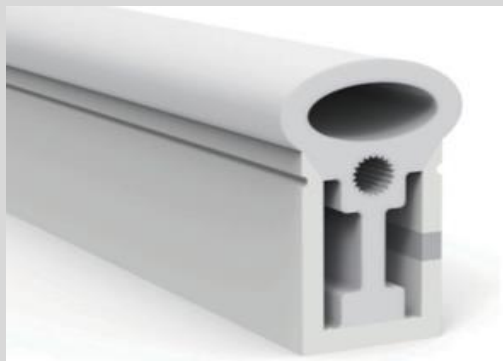
End cap with hole

End cap with no hole

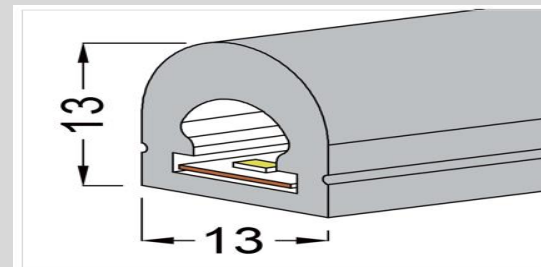
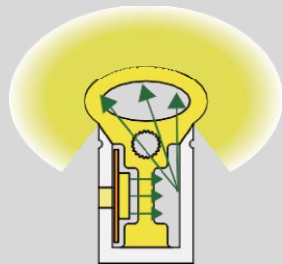
Aluminum Clip

Aluminum Profile

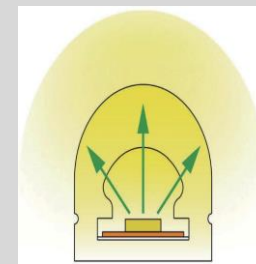
Flexible Profile



#LM12*25	
Specification	
PCB Width MM	10
Section Size MM	12*25
Beam Angle	270°
Light Direction	Side Lighting
Cutting Mark	YES



#LM13*13	
Specification	
PCB Width MM	10
Section Size MM	13*13
Beam Angle	180°
Light Direction	Top Lighting
Cutting Mark	YES



End cap with hole

End cap with no hole

Aluminum Clip

Aluminum Profile

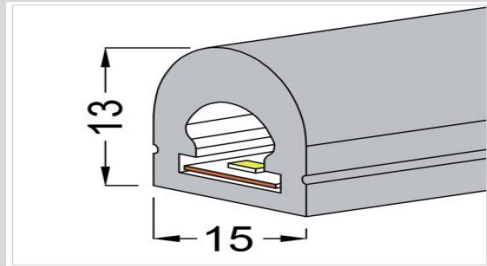
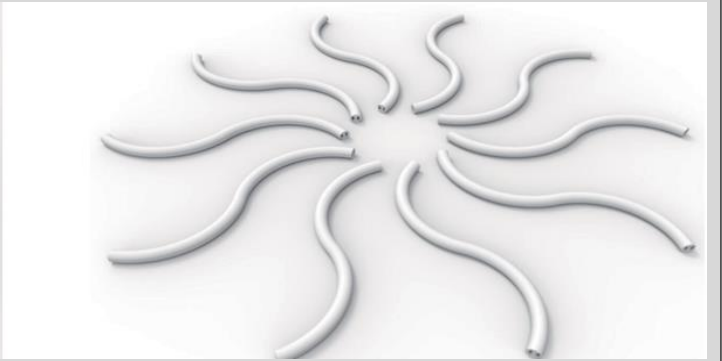
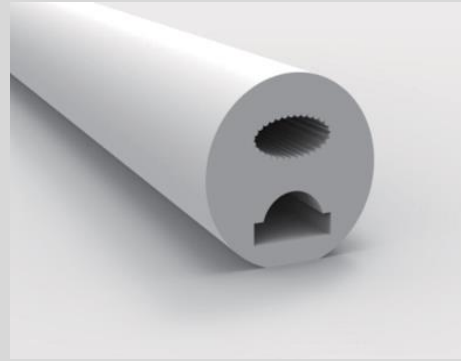
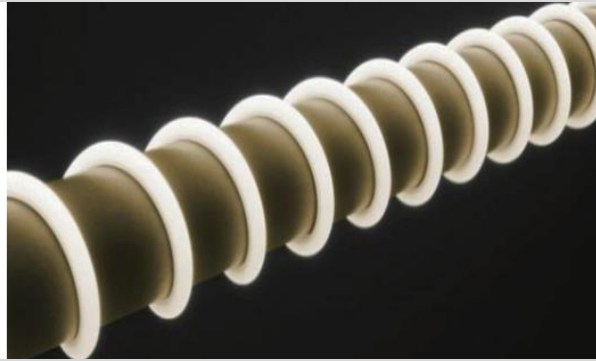
Flexible Profile



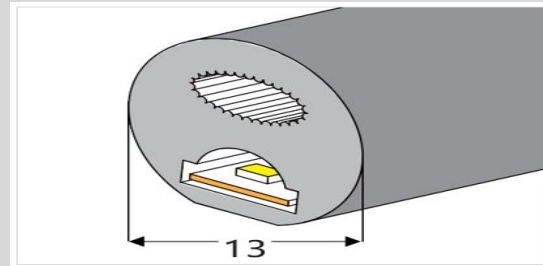
End cap with hole

End cap with no hole

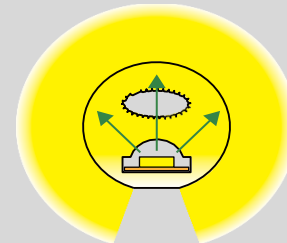
Plastic Clip



#LM13*15	
Specification	
PCB Width MM	10
Section Size MM	13*15
Beam Angle	180°
Light Direction	Top Lighting
Cutting Mark	YES



#LMØ13	
Specification	
PCB Width MM	10
Section Size MM	Ø13
Beam Angle	270°
Light Direction	Top Lighting
Cutting Mark	YES



End cap with hole

End cap with no hole

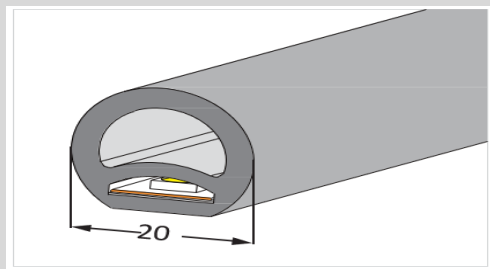
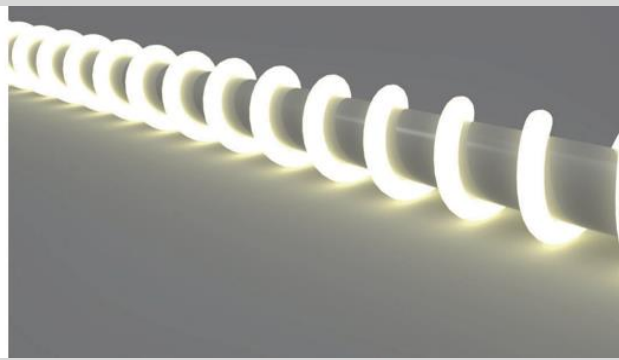
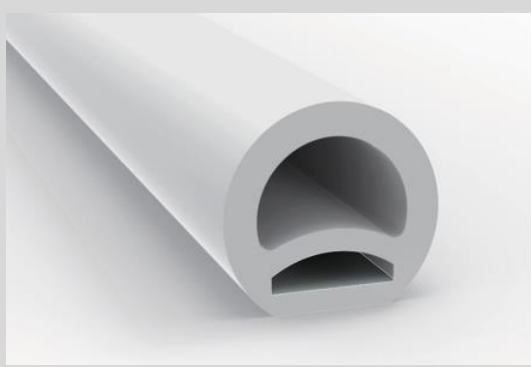
Plastic Clip



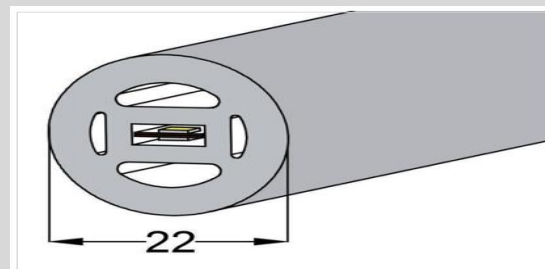
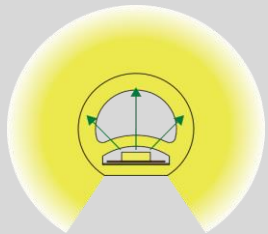
End cap with hole

End cap with no hole

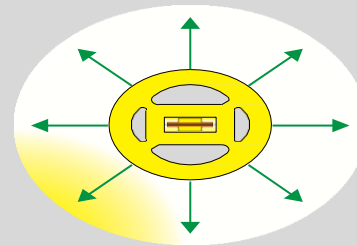
Plastic Clip



#LMØ20	
Specification	
PCB Width MM	10
Section Size MM	Ø20
Beam Angle	270°
Light Direction	Top Lighting
Cutting Mark	YES



#LMØ22	
Specification	
PCB Width MM	Double-side 6
Section Size MM	Ø22
Beam Angle	270°
Light Direction	Top Lighting
Cutting Mark	YES



End cap with hole

End cap with no hole

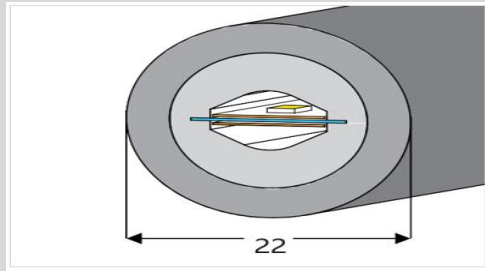
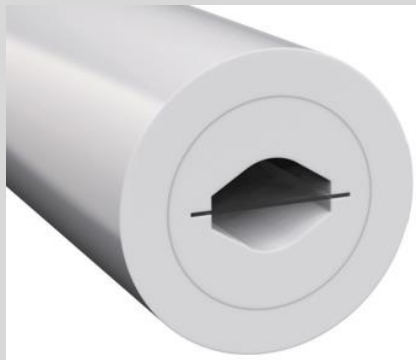
Plastic Clip



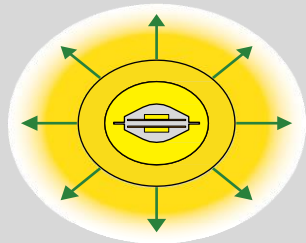
End cap with hole

End cap with no hole

Plastic Clip



#LMØ20	
Specification	
PCB Width MM	10
Section Size MM	Ø20
Beam Angle	270°
Light Direction	Top Lighting
Cutting Mark	YES



End cap with hole



End cap with no hole



Plastic Clip

